


# FISHWAY STATUS REPORT

Date: 6/7/2014  
 Inspection Period: 6/01 thru 6/07/2014

All JD Fishways are inspected twice per day during fish season, March. 1 - Nov. 31  
 Frequent monitoring of the PLC displays in SMF Fisheries Office as necessary.



**US Army Corps  
of Engineers**  
Portland District

## JOHN DAY DAM

JD/WC Project-Fisheries  
 P.O. Box 823  
 Rufus, Oregon 97050  
 Phone: 541-506-7860

John Day Dam	Inspections	Criteria	Total Number of Inspections: 14	Temperature: 58 F
	Out of Criteria	Limit		Secchi: 3.6 Ft.
<b>NORTH FISHWAY</b>			In regular service. Five AWS pumps available since 4/11.	
Exit differential	0	≤ 0.5'		
Exit Control weirs	0	High setting	High setting is normal for JDN	
Count station differential	0	≤ 0.3'		
Weir crest depth (DS gauge)	0	1.3' ± 0.1'	Temporary 1.3' for shad passage since 5/22.	
Entrance differential	0	1.0' - 2.0'	AVG 1.5	
<b>SOUTH FISHWAY</b>			In regular service with all three AWS turbines.	
Exit differential	0	≤ 0.5'		
Exit Control weirs	0	MID setting	MID is normal for JDS	
Count station differential	0	≤ 0.3'		
Weir crest depth (US gauge)	0	1.3' ± 0.1'	Temporary 1.3' for shad passage since 5/22.	
South entrance differential	0	1.0' - 2.0'	AVG 1.4	
Entrance weir SE1	0	depth (≥ 8')	AVG 8.6	
Collection channel velocity	0	1.5 - 4 fps	AVG 3.20	
Bay 1 differential	0	1.0' - 2.0'	AVG 1.6	
N. Entrance PH(Bay 19)differential	0	1.0' - 2.0'	AVG 2.0	
Entrance weir NE1	0	depth (≥ 8')	AVG 8.6	
Entrance weir NE2	0	depth (≥ 8')	AVG 8.6	
<b>JUVENILE PASSAGE</b>			JBS/SMF in regular service since 3/30.	
Forebay/bypass conduit differential	0	4.0' - 5.0'	AVG 4.6	
Submersible traveling screens	0	visual inspect	Next underwater camera inspection of STSs scheduled for week of 6/21.	
Turbine trashrack drawdown	2	<1.5', wkly	Drawdowns of 1.6' at two Mus, more at 1.4 to 1.5' on 6/4 and 6/5. JD Ops lowered MWs.	
Vert barrier screen drawdown	0	<1.5', wkly	JD Fisheries crew performs frequent gate wells' drawdowns depending on river debris.	
Spill volume	0	30/40 %	Per the PNNL experimental block design, changing every two days.	
Spill pattern	0	per FPP		
Turbine Unit Priority	0	per FPP		
Turbine 1% Efficiency	0	per FPP		

## SMOLT MONITORING FACILITY

**Operation:** SMF is in sampling mode since 3/31 AM. Daily 24 hrs smolt sampling by PSMFC crew since 4/1.

JD Fisheries works regular 24/7 swing shift schedule as required by FPP; it will continue this until the end of sampling season on 9/15.

**Debris:** Moderate to heavy; primarily tumbleweeds with some sticks, branches, and wooden debris.

**Maintenance:** None.

### Research:

Battelle's spring component completed on 5/28 and their crew is in recess. The summer collection starts on 6/9 and will continue for approx. one month.

**Fallbacks:** AVG: 32                      MAX: 53                      MIN: 12

## OTHER ISSUES:

### JOHN DAY

**BIRDS :** see the Avian Numbers tab. We report all species and locations, but in reality only gulls in the tailrace BRZ are relevant at JD.

USDA hazing from a boat started on 4/17; one 8 hrs shift, 7 days a week will continue through the end of July. A slight increase in numbers of gulls PM after hazing stops, but almost all are flying downstream of the avian tailrace BRZ grid. Gull predation at JD continues to be estimated as minimal. 124 out of 125 total primary lines are intact/ in place.

### Operations:

JD North Fishway is in regular service and meeting the FPP criteria.

JD South Fishway in regular service and meeting the FPP criteria.

### Maintenance:

JD North AWS pumps - five out of total six are available for service since 4/11. AWS pump # 4 continues in OOS status due to its lower bearing issues.

JD Engineering/contractor continue with its repairs.

Calibration: 6/7/2014 All sensors were within the criteria of 0.3' .

**Gatewell Drawdown:** High differentials of 1.4-1.6' at a number of MU running high output of 140 to 150 MW on 6/4 and 6/5.

JD Structural crew commenced intensive raking of MU intakes immediately on 6/4 and continued on 6/5 to lower all differentials below 1.2'.

The raking was successful as all differentials were found at 1.2' or lower over the weekend; there was no evidence of debris in the rake's scoop.

Additionally, condition of smolts sampled at SMF was normal for this time of year, with no signs of elevated descaling during the entire week.

### Research:

JD Fisheries coordinating with research groups for the upcoming 2014 studies:

Tribal collection of adult lamprey at JD CS is slated to commence in early July.

PSMFC/WDFW dam angling from the JD PH tailrace deck for pikeminnow underway with a great week of 656 fish; YTD catch is 1,131.

U of I Testing of JD North LPS (Lamprey Passage System) preparing for their season's work starting in July 2014.

PNNL's Spring Component completed at JD SMF on 5/28 ( last day of collecting juveniles for tagging.) Their crew is in recess.

PNNL JD Summer Juvenile Salmonids passage survival study will start on 6/9 (first day of collection . )

2014 Adult Salmonids counting by Normandeau Ass. continues through October 31 as required by FPP.

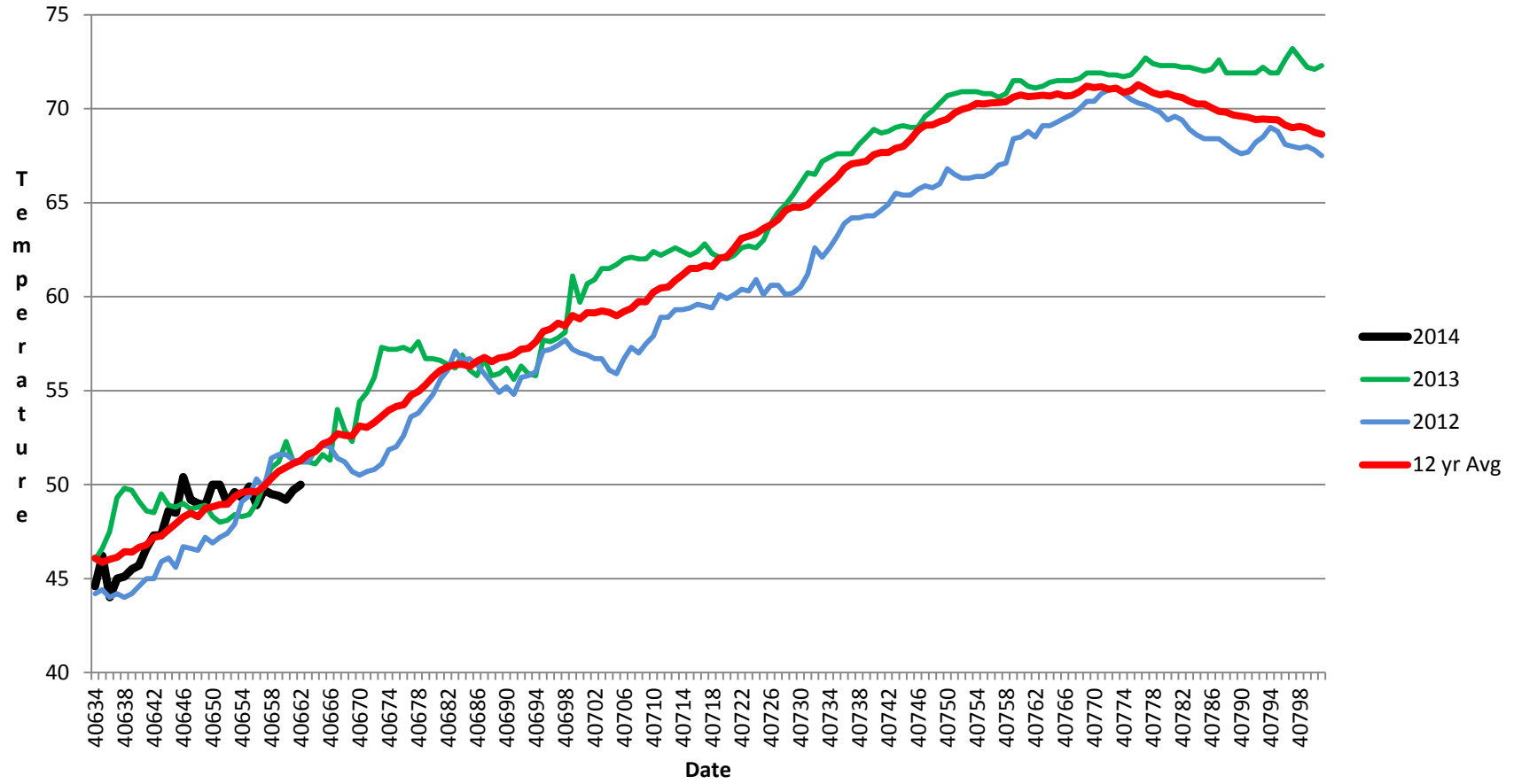
Adult Salmonids Radio telemetry evaluations are ongoing at both JD adult fishway. University of Idaho crew is in charge of detecting of all adult salmonids, which were tagged and released at Bonneville Dam.

Glen A. Smith PE

Date: \_\_\_ 10-Jun-14

OPM John Day/Willow Creek Project

# JDA SMF Water Temp



## JDA COLLECTION CHANNEL VELOCITY

Date 6-Jun-14  
By: pkc, cmg

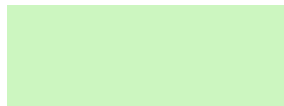
Bay(s)	Time	Sec.	Velocity (f/s)
0-2	01:11.0	71	2.54
2 - 4	0:02:08	128	3.16
4 - 6	0:03:02	182	3.33
6 - 8	0:04:01	241	3.05
8 - 10	0:05:00	300	3.05
10 - 12	0:05:55	355	3.27
12 - 14	0:06:57	417	2.90
14 - 16	0:07:53	473	3.21
16 - 18	0:08:35	515	4.29

**3.20**



John Day	3-Jun-14	1	9:00	SWFB	0	0	0	0	0	0	0	0	0	0	0	0	0
John Day	3-Jun-14	1	9:00	PH1	0	0	0	0	0	0	0	0	0	0	0	0	0
John Day	3-Jun-14	1	9:00	PH2	0	0	0	0	0	0	0	0	0	0	0	0	0
John Day	3-Jun-14	1	9:00	PH3	0	0	0	0	0	0	0	0	0	0	0	0	0
John Day	3-Jun-14	1	9:00	SW1	0	0	0	0	0	0	0	0	0	0	0	0	0
John Day	3-Jun-14	1	9:00	SW2	0	0	0	0	0	0	0	0	0	0	0	0	0
John Day	3-Jun-14	1	9:00	SW3	0	0	0	0	0	0	0	0	0	0	0	0	0
John Day	3-Jun-14	2	14:30	PHFB	0	0	0	0	0	0	0	0	0	40			40
John Day	3-Jun-14	2	14:30	SWFB	0	0	0	0	0	0	0	0	0	0	0	0	0
John Day	3-Jun-14	2	14:30	PH1	1	0	0	0	0	0	0	0	0	0	0	0	1
John Day	3-Jun-14	2	14:30	PH2	0	0	0	0	0	0	0	0	0	0	0	0	0
John Day	3-Jun-14	2	14:30	PH3	0	0	0	0	0	0	0	0	0	0	0	0	0
John Day	3-Jun-14	2	14:30	SW1	0	0	0	0	0	0	0	0	0	0	0	0	0
John Day	3-Jun-14	2	14:30	SW2	0	0	0	0	0	0	0	0	0	0	0	0	0
John Day	3-Jun-14	2	14:30	SW3	0	0	0	0	0	0	0	0	0	0	0	0	0
John Day	4-Jun-14	1	9:00	PHFB	0	0	0	0	0	0	0	0	8	30			38
John Day	4-Jun-14	1	9:00	SWFB	0	0	0	0	0	0	0	0	0	0	0	0	0
John Day	4-Jun-14	1	9:00	PH1	0	0	0	0	0	0	0	0	0	0	0	0	0
John Day	4-Jun-14	1	9:00	PH2	0	0	0	0	0	0	0	0	0	0	0	0	0
John Day	4-Jun-14	1	9:00	PH3	0	0	0	0	0	0	0	0	0	0	0	0	0
John Day	4-Jun-14	1	9:00	SW1	0	0	0	0	0	0	0	0	0	0	0	0	0
John Day	4-Jun-14	1	9:00	SW2	0	5	0	0	0	0	0	0	0	0	0	0	5
John Day	4-Jun-14	1	9:00	SW3	0	0	0	0	0	0	0	0	0	0	0	0	0
John Day	4-Jun-14	2	15:00	PHFB	0	0	0	0	0	0	0	0	3	30			33
John Day	4-Jun-14	2	15:00	SWFB	0	0	0	0	0	0	0	0	0	0	0	0	0
John Day	4-Jun-14	2	15:00	PH1	0	0	0	0	0	0	0	0	0	0	0	0	0
John Day	4-Jun-14	2	15:00	PH2	0	0	0	0	0	0	0	0	0	0	0	0	0
John Day	4-Jun-14	2	15:00	PH3	0	0	0	0	0	0	0	0	0	0	0	0	0
John Day	4-Jun-14	2	15:00	SW1	0	0	0	0	0	0	0	0	0	0	0	0	0
John Day	4-Jun-14	2	15:00	SW2	0	2	0	0	0	0	0	0	0	0	0	0	2
John Day	4-Jun-14	2	15:00	SW3	0	2	0	0	0	0	0	0	0	0	0	0	2
John Day	5-Jun-14	1	8:00	PHFB	0	0	0	0	0	0	0	0	6	31			37
John Day	5-Jun-14	1	8:00	SWFB	0	0	0	0	0	0	0	0	0	0	0	0	0
John Day	5-Jun-14	1	8:00	PH1	0	0	0	0	0	0	0	0	0	0	0	0	0
John Day	5-Jun-14	1	8:00	PH2	0	0	0	0	0	0	0	0	0	0	0	0	0
John Day	5-Jun-14	1	8:00	PH3	0	0	0	0	0	0	0	0	0	0	0	0	0
John Day	5-Jun-14	1	8:00	SW1	0	0	0	0	0	0	0	0	0	0	0	0	0
John Day	5-Jun-14	1	8:00	SW2	0	3	0	0	0	0	0	0	0	0	0	0	3
John Day	5-Jun-14	1	8:00	SW3	0	4	0	0	0	0	0	0	0	0	0	0	4
John Day	5-Jun-14	2	14:00	PHFB	0	0	0	0	0	0	0	0	4	28			32





Observer	Notes
----------	-------

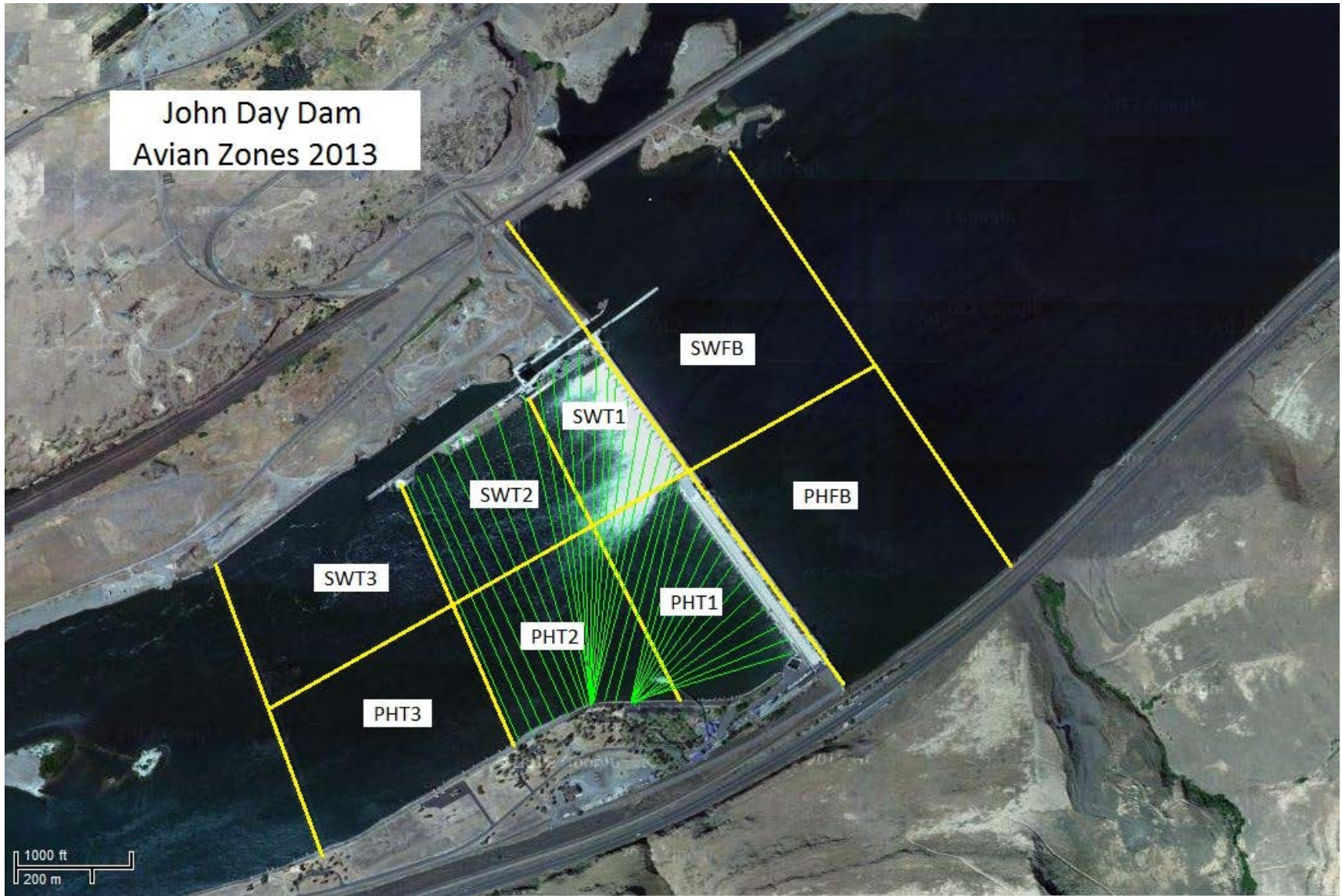
Dale Dale Dale Dale Dale Dale Dale Dale	
Dale Dale Dale Dale Dale Dale Dale Dale	
Dale Dale Dale Dale Dale Dale Dale Dale	
Dale Dale Dale Dale Dale Dale Dale Dale	
Dale	



Dale Dale Dale Dale Dale Dale Dale Dale	
Dale Dale Dale Dale Dale Dale Dale Dale Dale	
Pete Pete Pete Pete Pete Pete Pete Pete Pete	
Pete Pete Pete Pete Pete Pete Pete Pete	
Pete Pete Pete Pete Pete Pete Pete Pete	
Pete	

Pete Pete Pete Pete Pete Pete Pete	
Pete Pete Pete Pete Pete Pete Pete Pete	
Pete Pete Pete Pete Pete Pete Pete Pete	
Pete Pete Pete Pete Pete Pete Pete Pete	
Pete Pete Pete Pete Pete Pete Pete	

John Day Dam  
Avian Zones 2013



**John Day:**

	Temp:	Secchi:	Fallbacks
Sun	58	3.0	29
Mon	58	3.5	29
Tues	58	3.5	12
Wed	58	3.0	34
Thur	59	4.0	27
Fri	59	4.0	53
Sat	59	4.0	37
AVG:	<b>58</b>	AVG: <b>3.6</b>	AVG <b>32</b>
			MAX <b>53</b>
			MIN <b>12</b>

	NE1	NE2	S.Ent	SE1	N.Ent	JBS Diff	Bay1	Bay19
Sun	8.4	8.4	1.4	8.5	1.5	4.6	1.7	2.0
Sun	9.2	9.2	1.2	9.5	1.4	4.6	1.5	1.9
Mon	8.8	8.9	1.4	8.3	1.5	4.6	1.7	2.0
Mon	8.9	8.9	1.2	8.8	1.5	4.6	1.5	2.0
Tues	8.2	8.2	1.4	8.3	1.4	4.6	1.7	2.0
Tues	8.3	8.3	1.5	8.3	1.4	4.5	1.8	1.8
Wed	8.3	8.2	1.3	8.1	1.6	4.6	1.7	2.0
Wed	8.2	8.2	1.4	8.0	1.4	4.6	1.7	2.0
Thur	8.1	8.1	1.5	8.0	1.5	4.6	1.7	2.0
Thur	8.3	8.3	1.5	8.2	1.5	4.6	1.7	2.0
Fri	8.8	8.8	1.4	8.6	1.4	4.7	1.5	2.0
Fri	9.1	9.2	1.3	9.0	1.4	4.6	1.5	2.0
Sat	8.9	8.9	1.3	9.0	1.3	4.7	1.6	1.7
Sat	8.5	8.5	1.4	9.2	1.5	4.5	1.6	1.9
AVG:	<b>8.6</b>	<b>8.6</b>	<b>1.4</b>	<b>8.6</b>	<b>1.5</b>	<b>4.6</b>	<b>1.6</b>	<b>2.0</b>